

Unit - Kharigram

**BEST 5 KAIZEN**

**April -2016**

## RSWM Limited, Kharigram - Best Kaizen : April 2016

Sr. No.	Department	Kaizen Title	Annulized Benefits in Rs. Lacs	Benefits - Monetary / System Improvement / Time Saving	Kaizen Originator
1	ENGG UTILITY	In Mill No. Luwa Rotary Filter Gear Box supplied by Luwa was very light duty and give frequest breakdown.	1.96	We have replaced the Gear Box with Heavy duty gear Box taken out from Old Blender machine which were supposed to be scrap	Sh. Sachin Babu
2	ENGG UTILITY	In ETP Lab PH Sensor broken problem was frequent which is costly Instrument.( Min two broken each year)	0.52	We have fixed a Taflon cover on sensor knob such that it will not break now and give long life.	Sh. OM Prakash
3	ENGG SJ11	It was observed that North & South Phase Allay lights remain On all the time.	0.70	Since sufficient Light coming through Deptt windows hence identified lights and switch off 57 LED Tube Lights and saved energy.	Sh. Manoj Kumar
4	ENGG M9	Original Servo Motor of Speed Frame from CTMTC costs approx. Rs. 3.50 Lacs	2.30	explored Indian source in Lenze and procured in low cost as Rs. 1.20 Lacs with same specification and installed on Speed Frame	Sh. Santosh Kumar
5	DYE HOUSE	Earlier Bix Mixing Lot first shifted from D/H to RMG and than for mixing in required Mill's Blow Room causing double Transportation cost.	1.23	We have started holding such big mixing bags in D/H till it alloated to Mill No. and than direct shift to particular Mills Blow Room. Saved double Transportation cost	Sh. Madan Lal



**BEFORE KAIZEN**

Observation : Before Kaizen in mill no.9 LR R/F ,Cdg & s/f at Rotary filter LUWA Make in H Plant. This gear box is supply by LUWA and very light duty .

**Category : ( Tick v right one)**

1. Productivity (P)	√
2. Quality (Q)	√
3. Cost (C)	√
4. Delivery (D)	
5. Safety (S)	
6. Environment (E)	
7. 5S	

**AFTER KAIZEN**

Observation : After Kaizen We have modification in LUWA Rotary Filter and fixing of old gear box on rotary filter .This gear box removed from blender M/C. So we had used on rotary filter LUWA. in mill no.6 and 9 R/F ,Cdg , S/F & TFO and Frequently failure rate is reduced .

**Benefit :**

Due to this kaizen we have reduced the breakdown and saving of cost of rotary gear .

**Tangible Gain Calculation (If applicable)**

One Gear box LUWA Rs.28000/- Each  
We have replace the gear motor 7 Nos.  
Total Amount Rs.28000\*7 Nos.=196000/-  
Save the amount in one Year

**ce Plan**

**Scope and plan (Horizontal Deployment)**

Identified By: Sn Sachin Babu  
Approved By : Sh Sanjay Vishnoi  
Implemented By: Sh.Neeraj Sharma

S N	Activity	Resp.	Target



**BEFORE KAIZEN**

Observation : Before Kaizen PH sensor broken in frequently.

**Category : ( Tick v right one)**

1. Productivity (P)	√
2. Quality (Q)	
3. Cost (C)	√
4. Delivery (D)	
5. Safety (S)	
6. Environment (E)	√
7. 5S	

**AFTER KAIZEN**

Observation : After Kaizen We have made the cover of PH Sensor by Teflon material in work shop .So, this is not broke the sensor. Sensor broke /Failed in twice time in years.

**Benefit :**

We have Financial Benefit in this kaizen because of Sensor failed in many time. with out loss and work completed . Save is Rs.26000/-Each

**Tangible Gain Calculation (If applicable)**

**Amount Rs 26000/- Each**  
**Two Time Failed Sensor =Rs.26000 x2**  
**Nos.=Rs. 52000/-**

**Identified By: Sh. .Om praksh**  
**Approved By : Sh.Sanjay Vishnoi**  
**Implemented By: Sh. Neeraj Sharma**

**Sustenance Plan**

S N	Activity	Resp.	Target

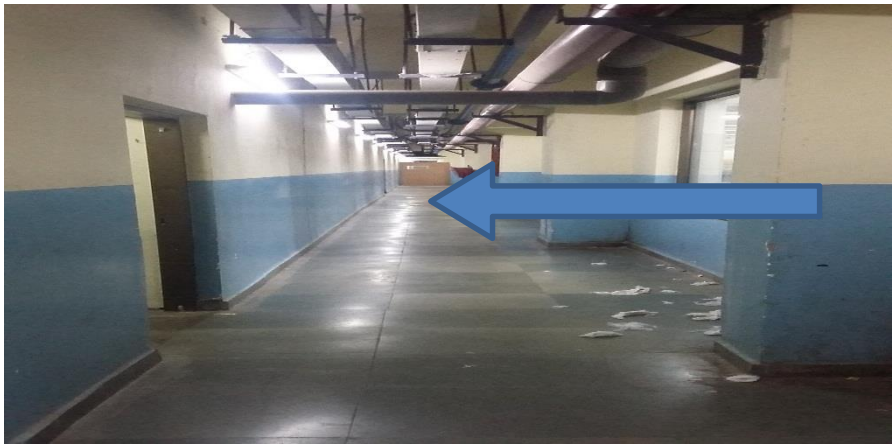
**Scope and plan (Horizontal Deployment)**

--

# KAIZEN SHEET

Unit No./Mill No.: SJ-11  
 Location: Alley Lighting  
 Date : 05.04.2016  
 KAIZEN No.: 03

**KAIZEN Theme : Optimization of Lighting illumination**



## BEFORE KAIZEN

Observation-: Optimization of Lighting illumination in south & north alley

## Category : ( Tick ✓ right one)

1. Productivity (P)	
2. Quality (Q)	
3. Cost (C)	✓
4. Delivery (D)	
5. Safety (S)	
6. Environment (E)	
7. 5S	✓



## AFTER KAIZEN

Observation : We switched off total-57 Light due to good illumination.

## Benefit :

Tangible / Intangible

## Tangible Gain Calculation (If applicable)

- We switched off total 57 LED tube lights & 1 LED rated watt is 20 W.
- $(57 \times 20 \times 24 \times 360) / 1000 = 9849$  Units & Rs. 70227.00 per annum

Identified By: Sh. Anil Soni

Approved By : Sh. AS Rathore

Implemented By: Sh. Manoj / Sh. Mahaveer Jain

## Sustenance Plan

## Scope and plan (Horizontal Deployment)

SN	Activity	Resp.	Target

# KAIZEN SHEET

**KAIZEN Theme : Alternate Servo motor purchase for Ch. S/F.**

Unit No./Mill No.: M-9  
 Location: Speed Frame  
 Date : 06/04/16  
 KAIZEN No.: 02



## BEFORE KAIZEN

Original servo motor of speed frame from CTMTC costs approx. Rs 3.5 lac

## Category : ( Tick v right one)

1. Productivity (P)	
2. Quality (Q)	
3. Cost (C)	√
4. Delivery (D)	
5. Safety (S)	
6. Environment (E)	
7. 5S	

## AFTER KAIZEN

Explore Indian source in Lenze and procure in low costs as Rs. 1.20 Lac with same specification of CTMTC motor.

## Benefit :

Tangible / Intangible

## Tangible Gain Calculation (If applicable)

1) Rs. 2.30 Lac. save

Identified By: Sh. Surendra

Approved By : Sh. AS Rathore

Implemented By: Sh. Santosh Kumar

## Sustenance Plan

SN	Activity	Resp.	Target
1	Regular checking of cable	Narendra	

## Scope and plan (Horizontal Deployment)

# KAIZEN SHEET

Unit No./Mill No.: DYE-HOUSE-01  
 Location :DYE-HOUSE  
 Date : 08-04-2016  
 KAIZEN No.: RSWM/L/2015/MX/Y

KAIZEN THEME : MIXING DYED BAG STORED IN DYE-HOUSE GODOWM.



## BEFORE KAIZEN

NORMALLY MIXING DYED BAG TRANSFER FROM D/H GODOWN TO RAW MATERIAL GODOWN ON DAILY BASIS BY CONTRACTOR WORKR.

Category : ( Tick v right one)

1. Productivity (P)	√
2. Quality (Q)	√
3. Cost (C)	√
4. Delivery (D)	
5. Safety (S)	
6. Environment (E)	
7. 5S	√



## AFTER KAIZEN

AFTER KAIZEN- WE HAVE TO HOLD DYED BAG OF BIG MIXING TILL MIXING RELEASE TO SPG&BLOWROOM AND AFTER THAT DYED BAG DIRECT TRANSFER TO SPG BLOWROOM FROM D/H.

Benefit :

**Benefit** We have Financial Benefit in this kaizen because dyed bag transportation Charge from dye house to raw material godown(RMG) And RMG to spg blowroom are in direct saving and quality of bag maintain due to less wear &tear of bag.

**Tangible Gain Calculation (If applicable)**

RMG to blowroom transportation charge-if 150 mt dyed fibre taken than 3750 bag x charge 2.75Rs= 10310x12=**123720Rs** annually.

Identified By: Madan Lal

Approved By : Sh. R Taori

Implemented By: Sh. Harikesh

## Sustenance Plan

SN	Activity	Resp.	Target

Scope and plan (Horizontal Deployment)